

The Professionals Group, LLC

For Sale:

Real Estate - 1.78 Acres

TYPE:

Residential—Acreage

ZONING:

Residential

PURCHASE

\$100,000

PRICE:

LOT SIZE

1.78 Acres

LOCATION:

Harrisburg, SD

TERMS:

Cash

POSSESSION:

Immediate

This property is located 4.5 miles S. of Sioux Falls on Minnesota Ave. (Lincoln County) - Nearby business: Country Meats



For More Information Contact:

Vern Bamsey, Broker Associate

vern@theprofessionalsgroup.com

(cell) 605-480-3033

3922 S. Western Ave.
Sioux Falls, SD 57105 605-275-7650
www.theprofessionalsgroup.com

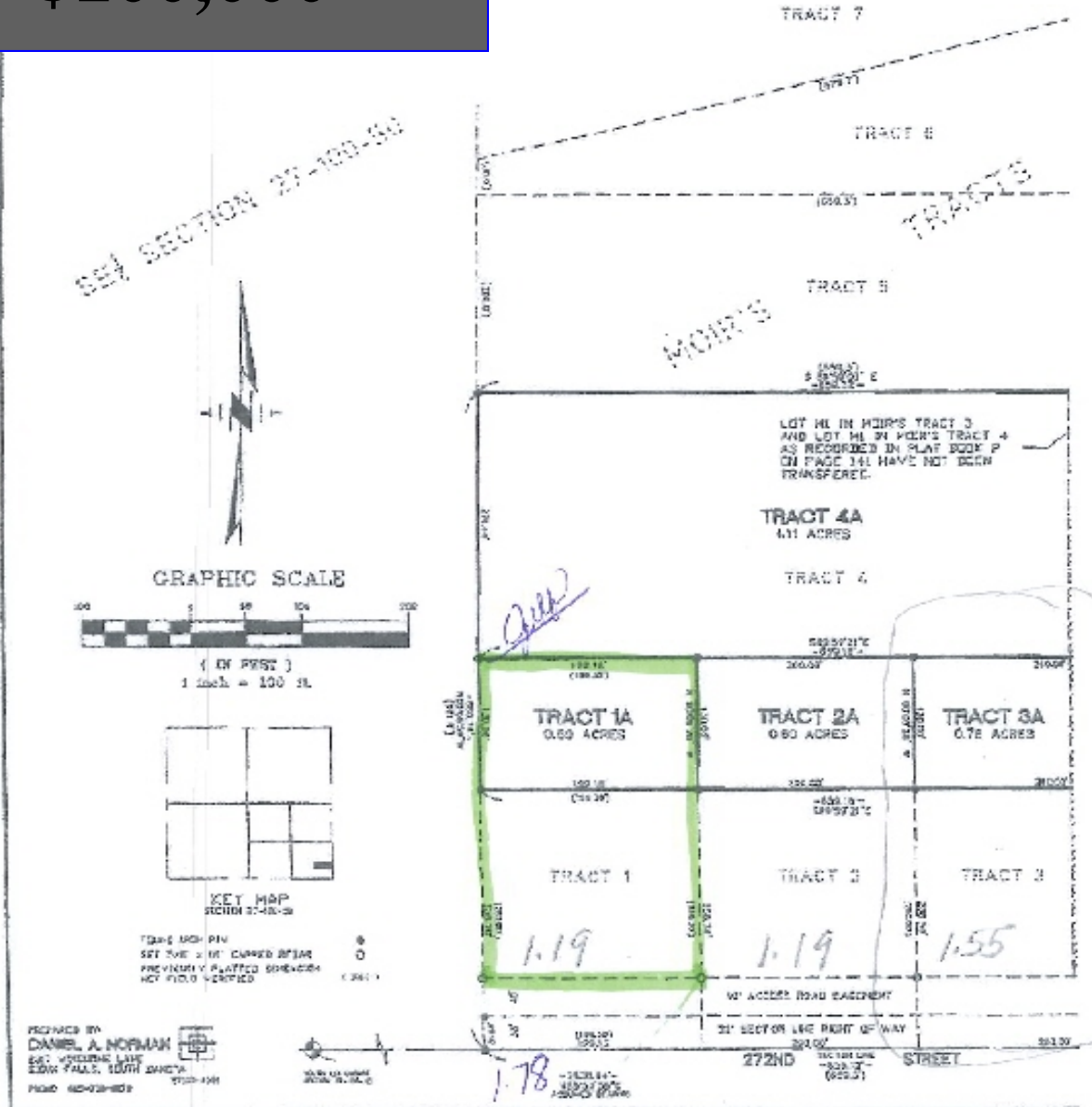
Business Transfers · Business Valuations · Commercial Sales / Leasing · Ag Sales / Leasing · Business Consulting

This information is deemed reliable. We do not warrant this information; implied or expressed. Age, square footage, income, expenses; all are approximations. Buyers and/or Lessors, should conduct their own investigations and rely on those results.

PLAT OF MOIR'S TRACTS AN ADDITION

IN THE E1/2 SE1/4 SE1/4 OF SECTION 27, TOWNSHIP 100 NORTH, RANGE 50 WEST OF THE 5TH PRINCIPAL MERIDIAN, LINCOLN COUNTY, SOUTH DAKOTA

\$100,000



For More Information Contact:

**The
Professionals
Group, LLC**

Vern Bamsey, Broker Associate

vern@theprofessionalsgroup.com

(cell) 605-480-3033

3922 S. Western Ave. - Sioux Falls, SD 57105 - 605-275-7650

www.theprofessionalsgroup.com

Business Transfers · Business Valuations · Commercial Sales / Leasing · Ag Sales / Leasing · Business Consulting

This information is deemed reliable. We do not warrant this information; implied or expressed. Age, square footage, income, expenses; all are approximations. Buyers and/or Lessors, should conduct their own investigations and rely on those results.

\$100,000



***The
Professionals
Group, LLC***

For More Information Contact:

Vern Bamsey, Broker Associate

vern@theprofessionalsgroup.com

(cell) 605-480-3033

3922 S. Western Ave. - Sioux Falls, SD 57105 - 605-275-7650

www.theprofessionalsgroup.com

Business Transfers · Business Valuations · Commercial Sales / Leasing · Ag Sales / Leasing · Business Consulting

This information is deemed reliable. We do not warrant this information; implied or expressed. Age, square footage, income, expenses; all are approximations. Buyers and/or Lessors, should conduct their own investigations and rely on those results.